

# KEADBY 3 CARBON CAPTURE POWER STATION

---

A collaboration between **SSE Thermal** and **Equinor**

**Document Ref: 4.15**

**Planning Inspectorate Ref: EN010114**

**The Keadby 3 (Carbon Capture Equipped Gas Fired Generating Station) Order**

**Land at and in the vicinity of the Keadby Power Station site, Trentside, Keadby, North Lincolnshire**

## **Indicative Landscape and Biodiversity Plan**

**The Planning Act 2008**

**The Infrastructure Planning (Applications: Prescribed Forms and Procedure) Regulations 2009 - Regulation 5(2)(o)**

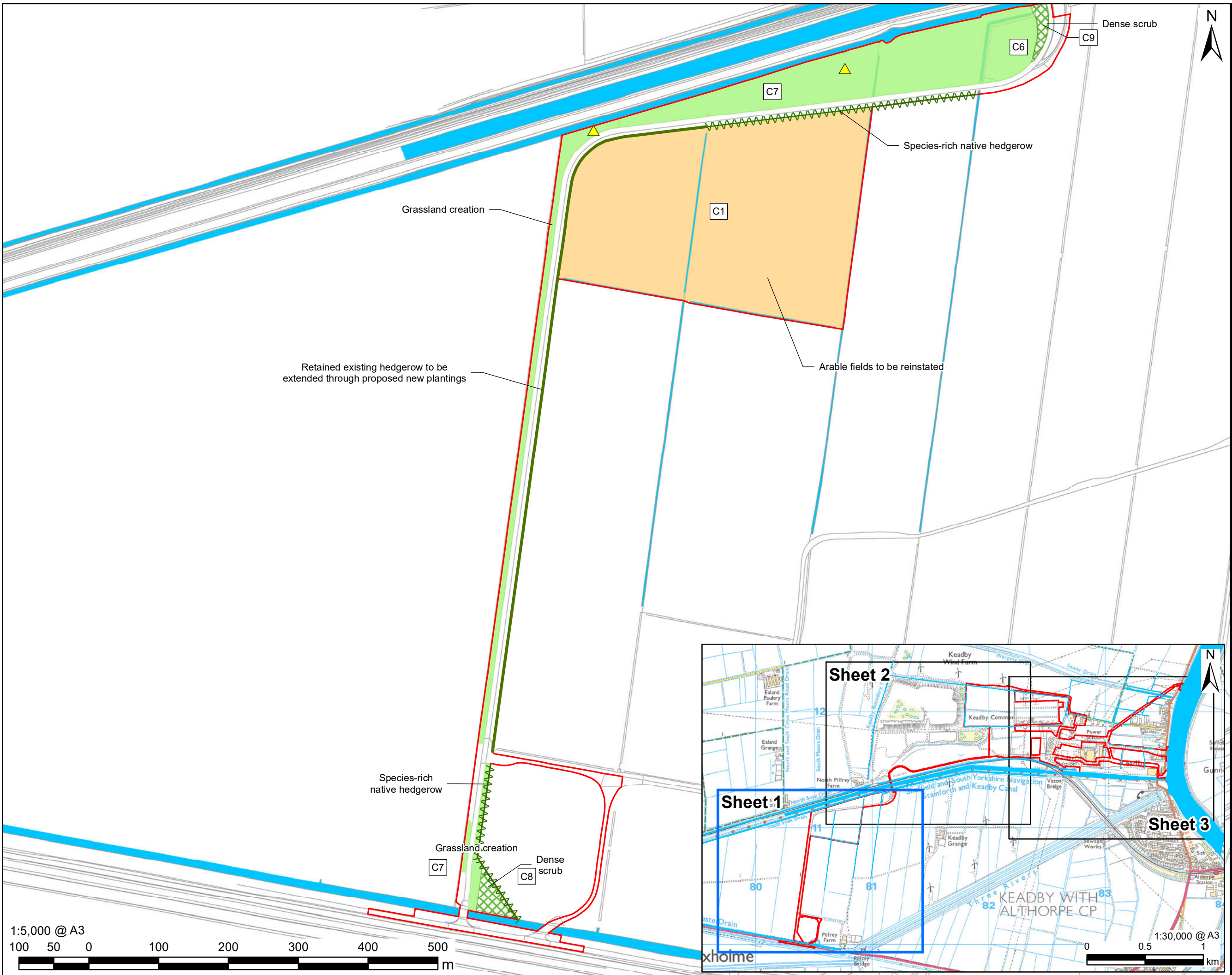
**Applicant: Keadby Generation Limited**

**Date: April 2022**

## DOCUMENT HISTORY

<b>Document Ref</b>	4.15
<b>Revision</b>	VP2.0 – Material Change Request and Update for Biodiversity Metric 3.0
<b>Document Owner</b>	AECOM

Revision: 02 Drawn: JW Checked: CA Approved: HN Date: 05/04/2022  
 Filename: K:\07 CAD & GIS\02\_Maps\DCO\_Update\_2022\_Plans\K\_DCO\_Doc\_4\_15\_Indicative\_Landscape\_and\_Biodiversity\_Plan\_A3\_20220331\_R02.mxd



**PROJECT**  
 The Keadby 3 (Carbon Capture Equipped Gas Fired Generating Station) Order

**APPLICANT**  
 Keadby Generation Limited

**CONSULTANT**  
 AECOM Limited  
 2 City Walk  
 Leeds  
 LS11 9AR

**LEGEND**

	The Order Limits
	Running Water
	Grassland Creation
	Proposed Dense Scrub
	Reinstated Arable Fields
	Proposed Species-Rich Native Hedgerow
	Retained Existing Hedgerow
	Indicative Locations for Barn Owl Towers

**NOTES**  
 Reproduced from Ordnance Survey digital map data © Crown copyright 2022. All rights reserved. Licence number 0100031673.

The Keadby 3 (Carbon Capture Equipped Gas Fired Generating Station) Order Regulation 5(2)(o) - Infrastructure Planning (Applications: Prescribed Forms and Procedures) Regulations 2009

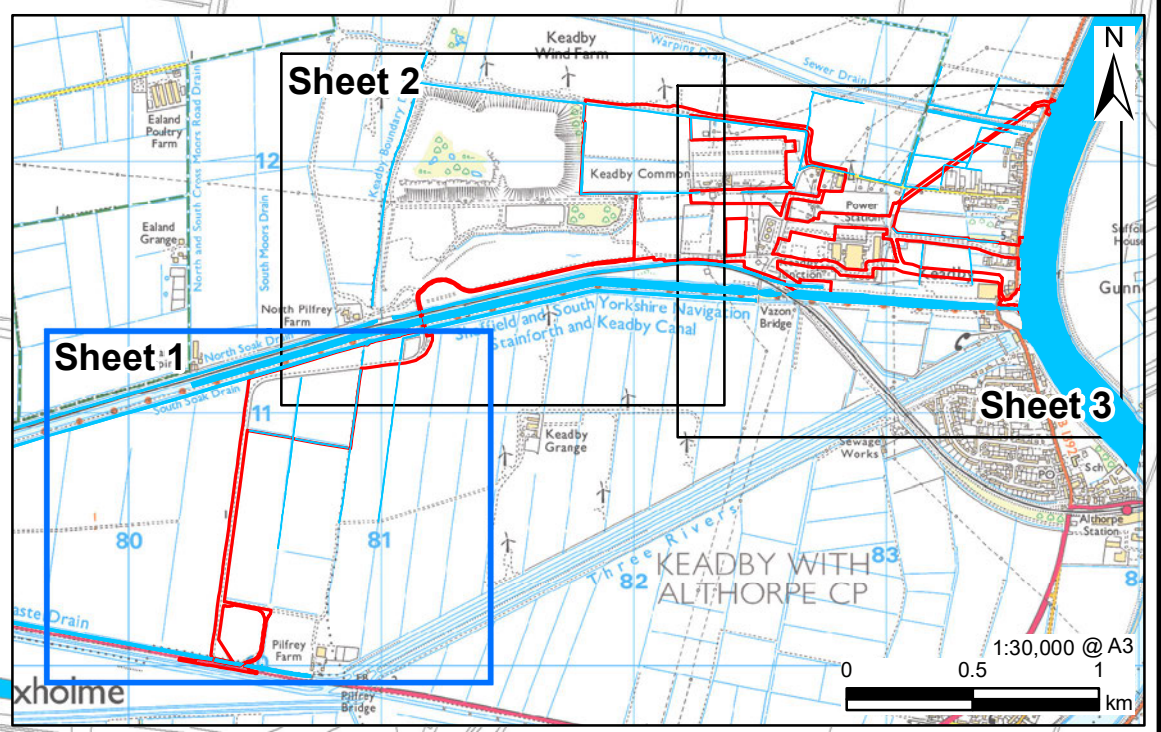
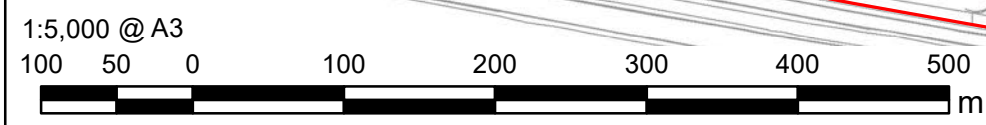
**ISSUE PURPOSE**  
 DCO APPLICATION

**PROJECT NUMBER**

60625943

**SHEET TITLE**  
 Indicative Landscape and Biodiversity Plan  
 Sheet 1 of 3

**SHEET NUMBER**  
 Application Document Ref. 4.15



This drawing has been prepared for the use of AECOM's client. It may not be used, modified, reproduced or relied upon by third parties, except as signed by AECOM or as required by law. AECOM accepts no responsibility and disclaims any liability whatsoever, to any party that uses or relies on this drawing without AECOM's express written consent. Do not scale this document. All measurements must be obtained from the stated dimensions.



**LEGEND**

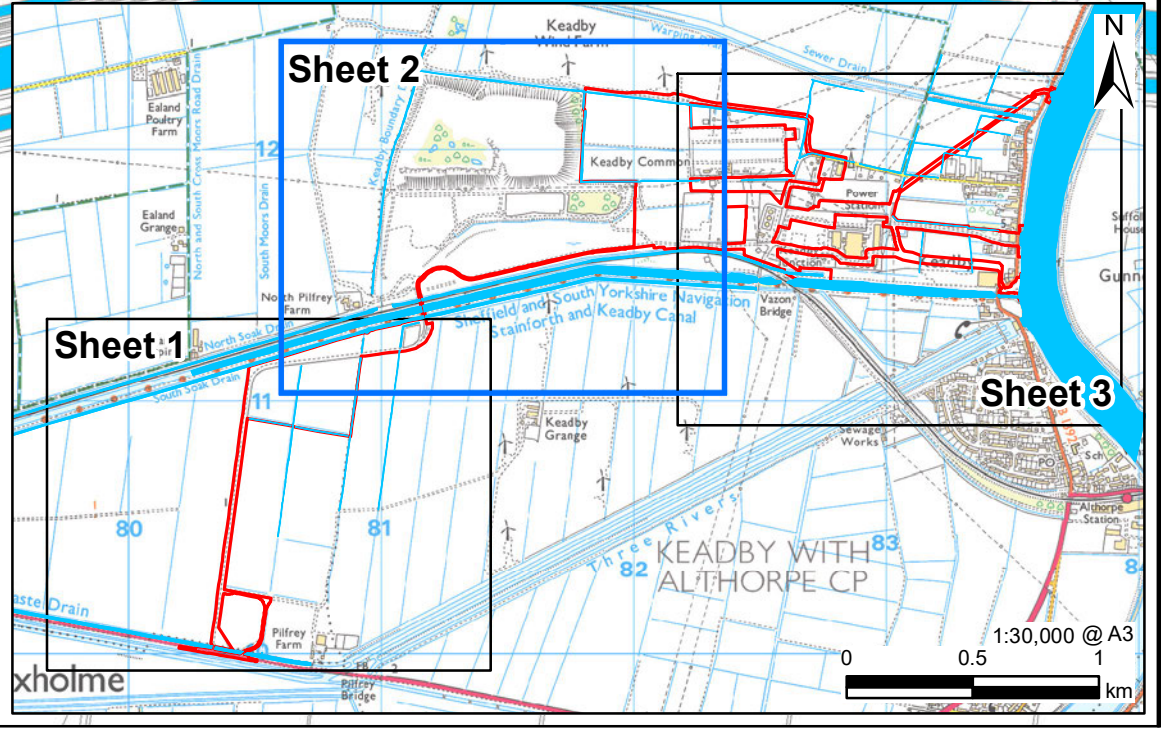
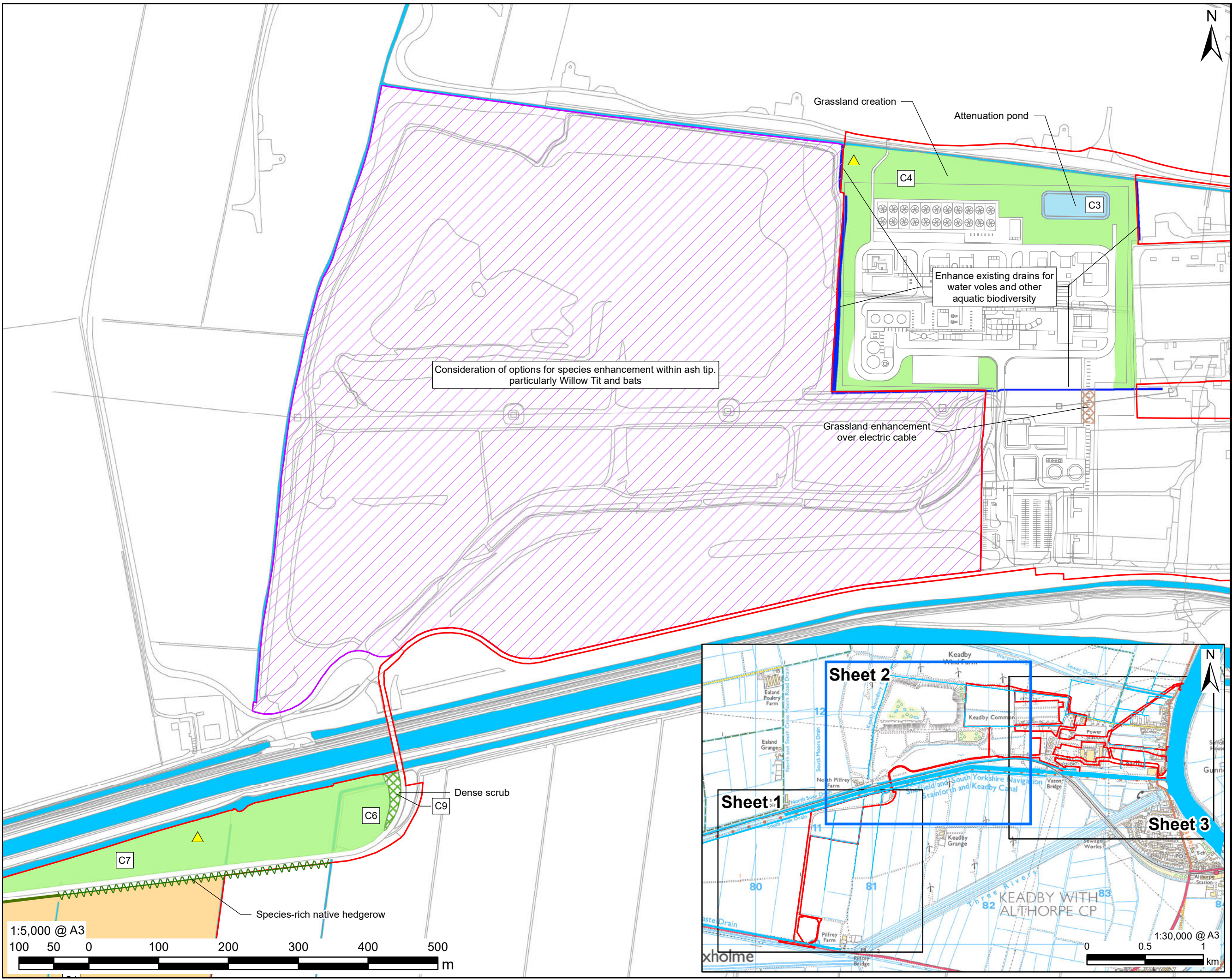
[Red outline]	The Order Limits
[Purple hatched]	Keadby Ash Tip
[Blue outline]	Running Water
[Light blue fill]	Attenuation Pond
[Dark blue outline]	Enhancement of Drains
[Green fill]	Grassland Creation
[Brown hatched]	Grassland Enhancement Over Electric Cable
[Green hatched]	Proposed Dense Scrub
[Orange fill]	Reinstated Arable Fields
[Green wavy line]	Proposed Species-Rich Native Hedgerow
[Green solid line]	Retained Existing Hedgerow
[Yellow triangle]	Indicative Locations for Barn Owl Towers

**NOTES**  
Reproduced from Ordnance Survey digital map data © Crown copyright 2022. All rights reserved. Licence number 0100031673.

The Keadby 3 (Carbon Capture Equipped Gas Fired Generating Station) Order Regulation 5(2)(o) - Infrastructure Planning (Applications: Prescribed Forms and Procedures) Regulations 2009

**ISSUE PURPOSE**  
DCO APPLICATION  
**PROJECT NUMBER**  
60625943  
**SHEET TITLE**  
Indicative Landscape and Biodiversity Plan  
Sheet 2 of 3

**SHEET NUMBER**  
Application Document Ref. 4.15

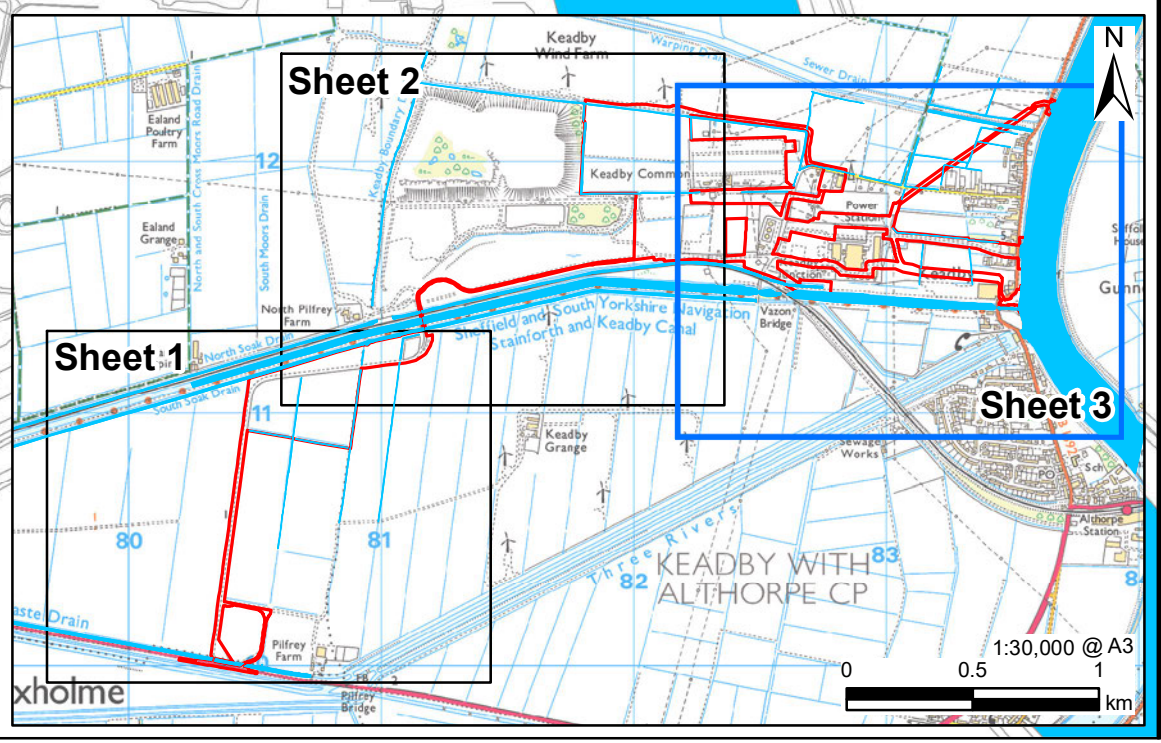
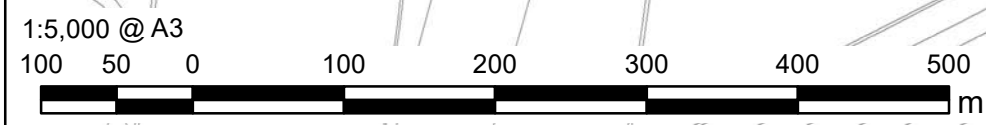
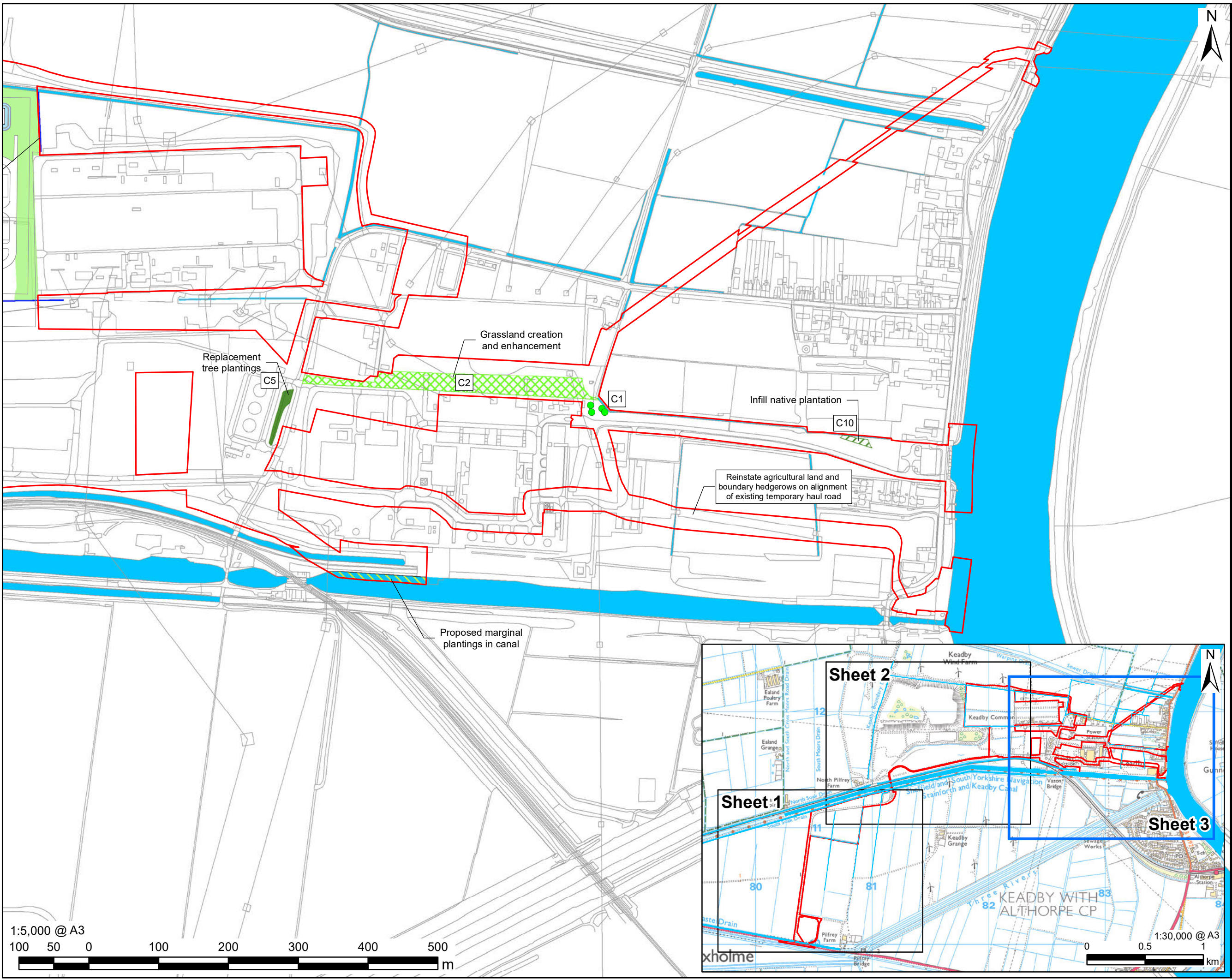


Revision: 02 Drawn: JW Checked: CA Approved: HN Date: 05/04/2022

Filename: K:\07 CAD & GIS\02\_Maps\DCO\_Update\_2022\_Plans\K\_DCO\_Doc\_4\_15\_Indicative\_Landscape\_and\_Biodiversity\_Plan\_A3\_20220331\_R02.mxd

This drawing has been prepared for the use of AECOM's client. It may not be used, modified, reproduced or relied upon by third parties, except as signed by AECOM or as required by law. AECOM accepts no responsibility and disclaims any liability whatsoever, to any party that uses or relies on this drawing without AECOM's express written consent. Do not scale this document. All measurements must be obtained from the stated dimensions.





**PROJECT**  
The Keadby 3 (Carbon Capture Equipped Gas Fired Generating Station) Order

**APPLICANT**  
Keadby Generation Limited

**CONSULTANT**  
AECOM Limited  
2 City Walk  
Leeds  
LS11 9AR  
T: [REDACTED]

**LEGEND**

- The Order Limits
- Running Water
- Attenuation Pond
- Broadleaved Plantation
- Woodland
- Enhancement of Drains
- Grassland Creation
- Grassland Creation and Enhancement
- Marginal Plantings in Canal
- Replacement Tree Plantings
- Proposed Broadleaved Tree

**NOTES**  
Reproduced from Ordnance Survey digital map data © Crown copyright 2022. All rights reserved. Licence number 0100031673.

The Keadby 3 (Carbon Capture Equipped Gas Fired Generating Station) Order Regulation 5(2)(o) - Infrastructure Planning (Applications: Prescribed Forms and Procedures) Regulations 2009

**ISSUE PURPOSE**  
DCO APPLICATION

**PROJECT NUMBER**  
60625943

**SHEET TITLE**  
Indicative Landscape and Biodiversity Plan  
Sheet 3 of 3

**SHEET NUMBER**  
Application Document Ref. 4.15

This drawing has been prepared for the use of AECOM's client. It may not be used, modified, reproduced or relied upon by third parties, except as signed by AECOM or as required by law. AECOM accepts no responsibility, and disclaims any liability whatsoever, to any party that uses or relies on this drawing without AECOM's express written consent. Do not scale this document. All measurements must be obtained from the stated dimensions.